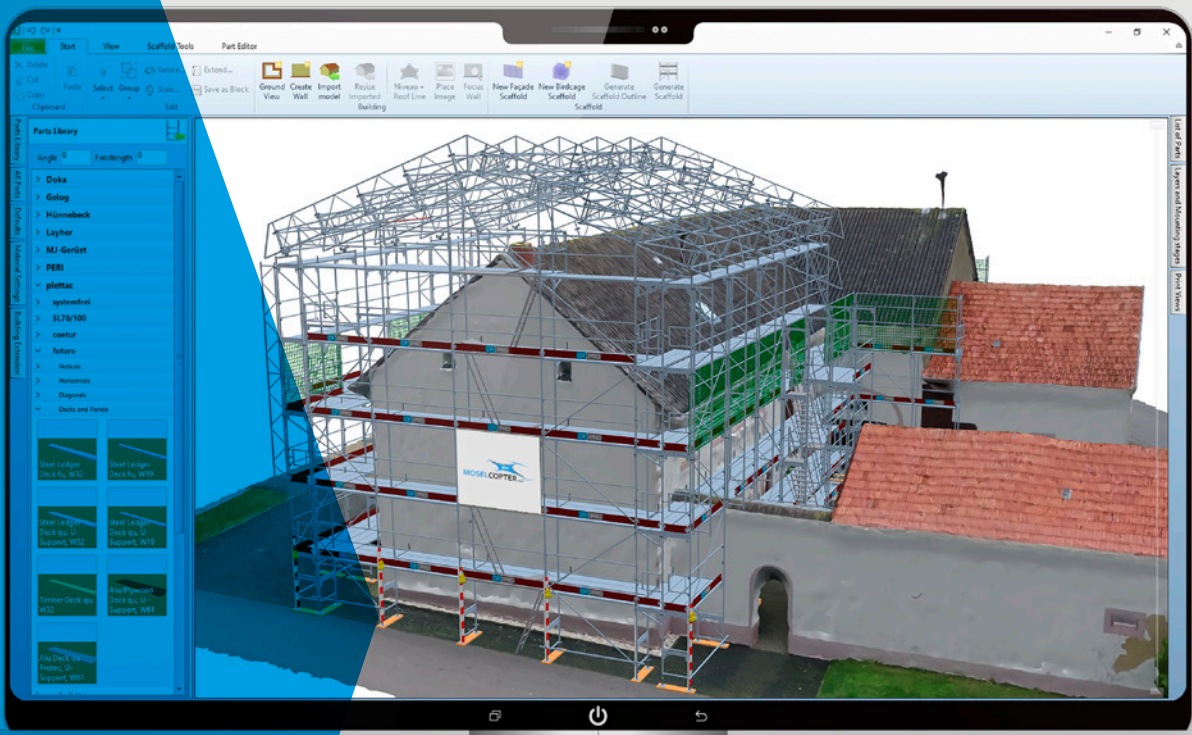


CP-Pro CAD

The intelligent planning software for scaffolding

- › Plot scaffolding
- › Calculate material lists
- › 3D display
- › Plan partial installations



Texturized 3D building model based on drone footage

CP-Pro CAD for Scaffolding

Functional, simple, flexible, and efficient

Our intelligent planning software CP-Pro CAD revolutionizes the digital mapping and presentation of scaffolding models. Extensive assistance features support you in expanding the scaffolding model even after creating a scaffolding suggestion. Individual components can be easily and directly applied to the 3D model. Thanks to the smart grid function, components can only be placed where fastening is also technically possible.

Images on the front page and 1)
by courtesy of Hermann Spanier,
Moselcopter GmbH, Longluch

Key features:

Component library

- › Component library for all relevant German scaffolding manufacturers
- › Generate own library of component groups
- › Component editor for creating and editing own components

Editing

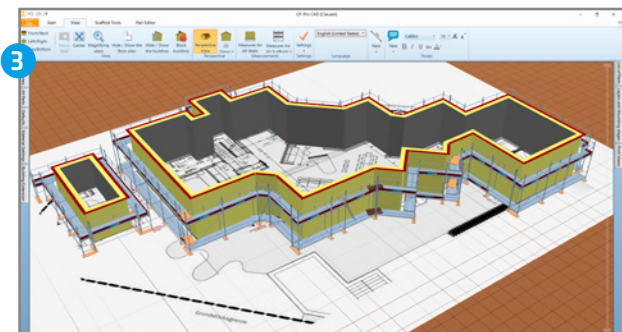
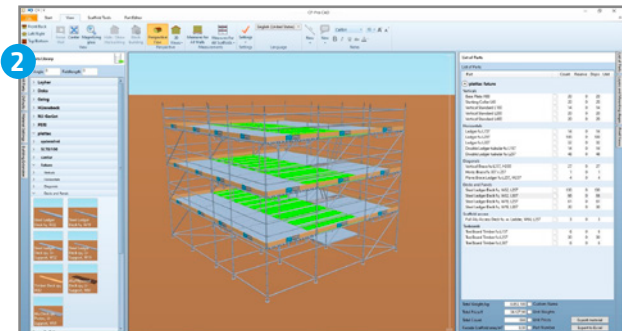
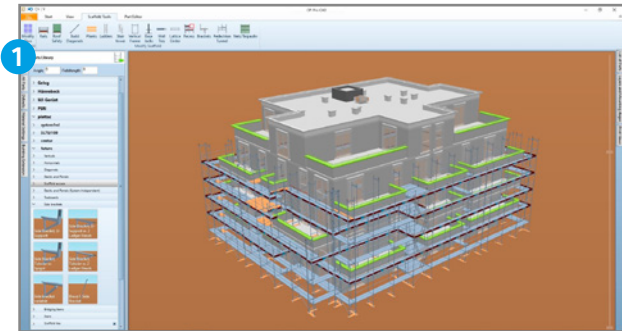
- › Create building floor plans directly in 3D
- › Adjust the roof line and configure sloped setup levels
- › Change bay lengths even in finished scaffolding
- › Create birdcage scaffolding
- › Display scaffolding and field dimensions in 3D
- › Place individual scaffolding components in 3D with a revolutionary snap function
- › Configure sectioning planes for partial installations
- › Partial installation/dismantling with the layer function

Assistance features

- › A range of parameters for creating scaffolding such as distance to roof edge
- › Automatic scaffolding suggestion for building walls
- › Automatic exterior and interior cornering
- › Extend scaffolding with a range of assistance features
- › Real-time evaluation of necessary scaffolding components

Input and output

- › Import 3D building models in .glb and .ifc format
- › Import floor plan drawings to easily create walls
- › Correct photo distortions directly in the program and project to building spaces
- › Export scaffolding including 3D building model in .glb format
- › Print out 2D and 3D views as well as material lists
- › Create user-defined print views for each project
- › Transfer 3D model to your mobile device with the CP-Pro Mobile App



Screenshots:

- 1 Partial installation/dismantling with the slider and layer function, imported BIM model
- 2 Material list for a birdcage scaffold, highlighting components via the material list
- 3 Importing and tracing floor plans

Have we caught your interest?

Simply visit our website www.cp-pro.com, download our demo version or get in touch with us.
We will be happy to show you how easy scaffold planning can be.

Requirements/Hardware recommendations:

- › Intel or AMD x64 processor (min. Intel Core i5 or comparable)
- › 3D graphics card with at least 4 GB VRAM (e.g. AMD Radeon or Nvidia GeForce, DirectX11 compatible)
- › Mouse
- › A computer with Windows 10 and 16 GB of main memory
- › At least 1 GB of free hard disk space
- › 3D building models can be imported up to a size of around 200 MB